

## INVESTOR INFORMATION

### HEADQUARTERS

DENSO CORPORATION  
1-1, Showa-cho, Kariya,  
Aichi 448-8661, Japan  
Telephone: +81-566-25-5511

### STOCK EXCHANGE LISTINGS

Tokyo, Osaka, and Nagoya stock exchanges

### NUMBER OF SHAREHOLDERS

47,771

### DATE OF ESTABLISHMENT

December 16, 1949

### INDEPENDENT AUDITORS

Deloitte Touche Tohmatsu

### COMMON STOCK

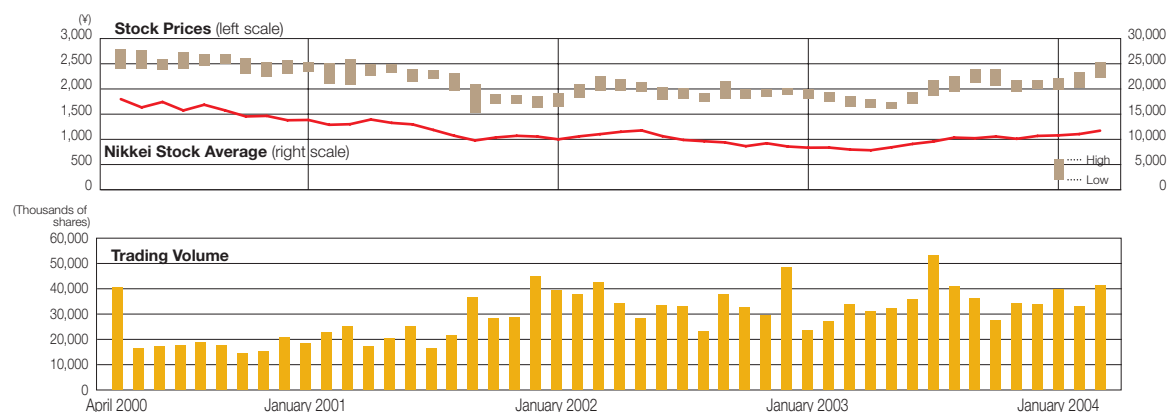
Authorized: 1,426,942,000 shares  
Issued: 884,068,713 shares

### TRANSFER AGENT

UFJ Trust Bank Limited  
1-4-3, Marunouchi, Chiyoda-ku,  
Tokyo 100-0005, Japan

### COMMON STOCK PRICE RANGE ON TOKYO STOCK EXCHANGE

(adjusted to reflect free share distributions and stock splits)



### PUBLICATIONS

Financial Statements  
Fact Book 'DENSO in Figures'  
Corporate Brochure  
Environmental & Social Report

### DENSO ON THE INTERNET

DENSO offers a wealth of financial information, including the latest reports and financial events schedule.

<http://www.globaldenso.com/en/investors/>

### INVESTOR RELATIONS

If you have any questions or would like a copy of our publications, please contact:

Financial Planning Center  
Corporate Planning Department  
DENSO CORPORATION  
1-1, Showa-cho, Kariya,  
Aichi 448-8661, Japan  
Telephone: +81-566-25-5849  
Facsimile: +81-566-25-4860

(As of March 31, 2004)