

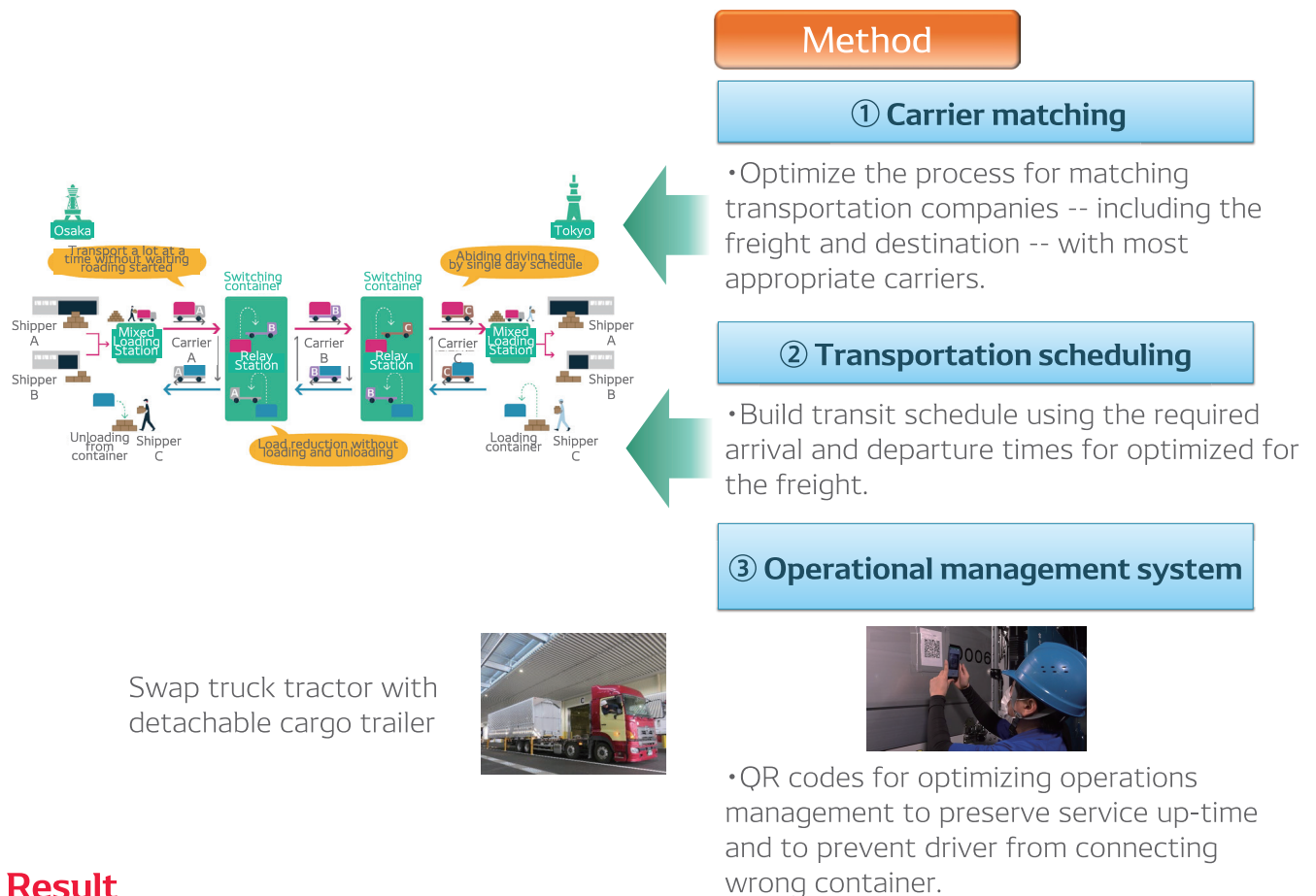
# Communication Solution for Long Haul Truck Driving

Shuttle Line of Communication – Sustainable Logistics

## Highlights

- Long haul truck driver working hours is not just a labor issue, but also a social issue due to implications on roadway safety. Driving regulations have been, or will be implemented in a number of countries. (Regulations in Japan will be in effect as of 2024.)
- DENSO's solution is an optimized matching function in order to remove the need for drivers to drive ultra-long distances.

## Solution overview



## Result

- Testing conducted in July 2023 with 5 shippers and 6 transportation companies: validate operation functioning including mixed loading.
- Drivers return home each night.
- Reduced environmental impact by limiting number of empty vehicles.